

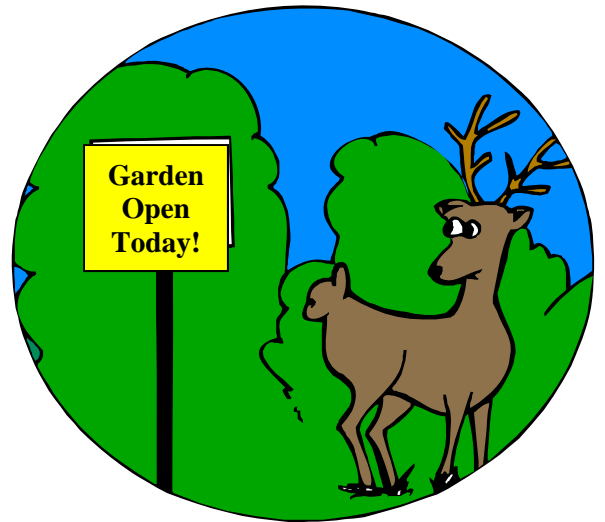
# Spring Garden Day 2012

Saturday, March 10, 2012  
8:45 am—3:30 pm  
Tamarac/Brunswick High School  
Troy, New York

*Welcome  
spring  
with our  
educational  
classes and  
fun events!*



Cornell University  
Cooperative Extension



Special Keynote Speaker:  
**Ruth Rogers Clausen**

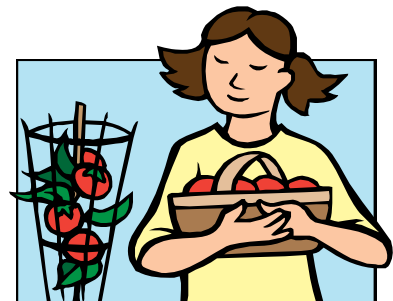
**Annuals, Perennials,  
Bulbs and Shrubs That  
Are Beautiful AND  
Deer Resistant**

Considering the explosion of deer populations across the United States and the huge amount of damage they inflict on rural, suburban, and even the urban gardens and parks, it is no surprise that deer and gardeners are seldom compatible. But is it possible to achieve a beautiful, deer-resistant garden without resorting to fences, barriers, and repellants? Indeed, you can still have a lush, thriving garden by making smart plant choices. Many stunning plants are unpalatable to deer because of their poisonous compounds, fuzzy or aromatic leaves, tough, spiny or bristly textures, and for a variety of other less obvious reasons.

As author of the acclaimed book, "Perennials For American Gardens," Ruth Rogers Clausen was the keynote speaker at our first-ever Spring Garden Day in 1998. She now returns with her new book, "50 Beautiful Deer-Resistant Plants: The Prettiest Annuals, Perennials, Bulbs, and Shrubs that Deer Don't Eat." Ruth will be available to sign copies of her book after her lecture.

*A celebration of gardening  
in Rensselaer County and  
the Capital District*

- \* Choose classes from 15 different gardening subjects
- \* Classes taught by local horticultural professionals, Capital District Master Gardeners and Extension Educators
- \* Delicious lunch provided by the Rensselaer County Master Gardeners
- \* Shop for bargains at the used garden book sale
- \* Win fabulous prizes at the Pick-A-Prize Auction
- \* Bring home a plant from the Plant Sale
- \* Exciting door prizes



Also Speaking:  
**Kevin Lee Jacobs of  
Garden Design Magazine on  
"The Easy Kitchen Garden"**

## Welcome To Spring Garden Day

**Full Day Registration:** The fee of \$29.00 entitles each participant to choose up to four classes for the day; to participate in the free lunch and door prize drawing; and to hear the keynote speaker. Register by examining the attached class schedule. Indicate your first, second, and third choice of classes on the form for each of the four class periods. Make sure to choose a lunch period or another class if you do not want lunch. Your class assignments will be available at the registration table on March 10. **You will not receive registration confirmation by phone or mail, but you can call us at (518) 272-4210 to make sure we received your registration.** The enclosed schedule is final, but last minute changes may be necessary. Although we try to give people their first choice, class sizes are limited, and, regretfully, we may have to place you in another class. Registration will be open until classes are full. Registrations are taken on a first come, first served basis. **Full day registrations will be accepted at the door only if space permits.** Refunds must be requested on or before March 3. After that date, no refunds will be made.

**Keynote Speaker Only Registration:** You can also hear the keynote speaker only for a fee of \$10.00. To register, check the appropriate box and mail us the registration form and fee. Registrations will also be accepted at the door for the keynote speaker only option.

**Time:** Doors open and registration starts at 8:45 AM. **Please do not arrive before 8:45 AM in order to allow us time to set up.** Your cooperation is appreciated!

**Lunch:** A free, delicious lunch consisting of home-made soups, sandwiches, desserts and beverages will be provided for all full day participants, courtesy of the Master Gardeners. Vegetarian items will also be available.

**Pick-A-Prize Auction:** We will hold a Pick-A-Prize Auction of garden-related items. Participants can buy tickets and “bid” on items by placing a ticket or tickets in a paper bag next to the item. Winners will be drawn at the end of the day after the last sessions. You must be present to win. Proceeds will support the Master Gardener Demonstration Garden.

**A used book sale and plant sale will be held in the lobby.**

**Door Prizes:** Door prizes will be awarded at the end of the day in the auditorium. **YOU MUST BE PRESENT TO WIN!**

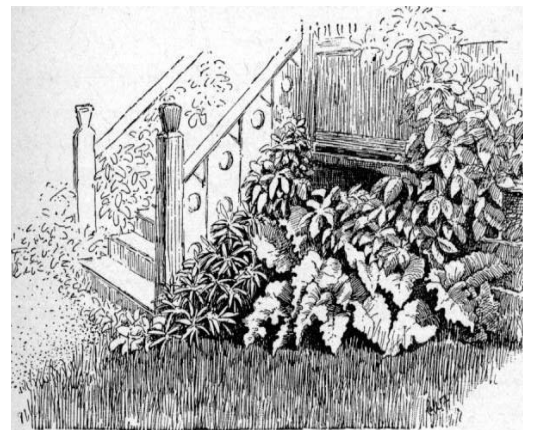
**In case of snow:** The program will be canceled only in the event of SEVERE weather. Listen to radio station WGY-810 for announcements.

### **Directions to Tamarac/Brunswick/Brittonkill High School:**

From the west (Albany, Schenectady, Troy): Take Route 7 East over the Collar City Bridge. From the east end of the bridge, proceed east on Route 7 (Hoosick Street) approximately 9 miles to a traffic light at Route 278 (Harley-Davidson dealer on right). Turn right onto Route 278 east and proceed for approximately 3 miles until Route 278 ends at a traffic light at Route 2. Turn left onto Route 2; the school is immediately on your left.

From the south (West Sand Lake/Route 43 area): Take Route 351 north, through the village of Poestenkill, until you reach Route 2. Turn left (west) onto Route 2. The school will be very shortly on your right.

**Questions:** Call the Horticulture Program at (518) 272-4210 or email Marcie at [mmp74@cornell.edu](mailto:mmp74@cornell.edu). Individuals with questions or special needs requiring accommodation should contact Cornell Cooperative Extension of Rensselaer County at the phone number above. Cornell Cooperative Extension of Rensselaer County provides equal program and employment opportunities.



# REGISTRATION FORM - SPRING GARDEN DAY March 10, 2012

**Please complete carefully and completely!**

1. Please indicate your first, second and third choices for each time period by writing 1, 2, or 3 on the line. Choosing second and third choices for each time period is necessary in case your first choice is filled. Regretfully, not everyone will receive all of their first choices, due to room size restrictions. Make sure you sign up for either the first or second lunch period (if desired). This will establish a tentative schedule.
2. You will receive final confirmation, based on class size and availability, at check-in at Spring Garden Day 2012. **You will NOT receive confirmation by mail or phone prior to the program, but you can call us at (518) 272-4210 with questions or to confirm we have received your registration. Registration is open until March 3, 2012 or when classes are filled.**
2. Only one name per form, please. You may photocopy this form or call CCE-Rensselaer Co. (518) 272-4210 for extras.
3. Send this completed form with check for \$29.00, made payable to Cornell Cooperative Extension, to: Cornell Cooperative Extension, Spring Garden Day, 61 State St. Troy, NY 12180. Thanks!

9:15 - 10:15	10:30 - 11:30	11:40 - 12:40	12:50 - 1:50	2:00 - 3:00	3:15
<b>Keynote Speaker</b>	<b>Bulbs For Every Gardener</b>  #1. ____	<b>LUNCH</b>  #5. ____	<b>LUNCH</b>  #9. ____	<b>Perennials – Go Native!</b>  #13. ____	<b>Exciting DOOR PRIZES:</b>
<i>Ruth Rogers Clausen Presents</i>	<b>Landscape Design Theory</b>  #2. ____	<b>Ground Covers...The Rodney Dangerfields Of The Garden World</b>  #6. ____	<b>The Easy Kitchen Garden</b>  #10. ____	<b>Gardening For A Lifetime</b>  #14. ____	<b>DRAWING WILL BE HELD IN THE AUDITORIUM</b>
<b>Perennials, Annuals, Bulbs And Shrubs</b>	<b>Chinese And Japanese Gardens</b>  #3. ____	<b>Landscape Lighting For Your Home</b>  #7. ____	<b>Garden Of Unearthly Delights</b>  #11. ____	<b>Rhododendrons And Azaleas: Culture And Care</b>  #15. ____	<b>YOU <u>MUST</u> BE PRESENT TO WIN!!</b>
<b>That Are Beautiful AND Deer Resistant</b>	<b>Home Grown Strawberries, Raspberries And Blueberries</b>  #4. ____	<b>Growing Glorious Dahlias</b>  #8. ____	<b>Flora, Fauna And People Of Mexico's Copper Canyon</b>  #12. ____	<b>Top Ten Weeds And What To Do About Them</b>  #16. ____	

NAME: \_\_\_\_\_ HOME PHONE: \_\_\_\_\_ WORK PHONE: \_\_\_\_\_

ADDRESS: \_\_\_\_\_ CITY & STATE: \_\_\_\_\_ Zip: \_\_\_\_\_

EMAIL ADDRESS: \_\_\_\_\_

Check One:    I have enclosed my check for \$29.00, payable to Cornell Cooperative Extension, for full day registration: \_\_\_\_\_  
                   I have enclosed my check for \$10.00, payable to Cornell Cooperative Extension, for keynote speaker only registration: \_\_\_\_\_

By registering I give my permission to Cornell Cooperative Extension of Rensselaer County to use any photos, slides, films, or sketches taken of my child or myself during this activity for publicity, advertising, and/or promotional purposes.

# Class descriptions and speakers

**1. Bulbs for Every Gardener** - There are many bulbs beyond tulips and daffodils! Linda Ford, Rensselaer County Master Gardener, will discuss the wide variety of tender and hardy bulbs and how to buy, plant, and grow them. Indoor bulbs will also be discussed, including information on how to get your amaryllis bulb to re-bloom.

**2. Landscape Design Theory** – This program will present some of the basic design concepts (balance, scale, repetition and much more) to allow you to see the how and why of landscape design. Amy Howansky of Backyard Solutions will explain it all using pictures from botanical gardens, famous gardens and even our local garden tours!

**3. Chinese and Japanese Gardens** – Join Rensselaer County Master Gardener Barbara Nuffer as she shares a photographic journey to the Chinese & Japanese Gardens in Portland, Oregon and San Francisco, California. Learn about these two different styles of gardens and discover elements of each you can use in your own garden.

**4. Home Grown Strawberries, Raspberries And Blueberries** - Laura McDermott, Regional Cornell Extension Fruit and Vegetable Specialist, explains all you need to know to grow delicious crops of nutritious berries in your home garden. Site selection, soils, and cultural requirements for each crop will be discussed.

**6. Groundcovers...The Rodney Dangerfields Of The Garden World** – There are dozens of groundcovers beyond Japanese pachysandra, yet they don't get any respect because we neglect to plant them. Our keynote speaker Ruth Rogers Clausen will show you a range of hardy and tender low-growing plants suitable as groundcovers in assorted situations.

**7. Landscape Lighting For Your Home** - Night presents us with a blank canvas. Light can reveal details and can hide areas of our gardens. Using light in our garden, we can create a completely new experience or recreate the familiarity of our garden. Local lighting designer Janet Lennox Moyer, author of The Landscape Lighting Book and She Paints with Light, will show you how landscape lighting can provide a sense of safety, enjoyment, and views from inside your home.

**8. Growing Glorious Dahlias** – Once you see a well-grown dahlia, you'll fall in love with their dramatic flowers and vigorous growth. While some gardeners disdain digging them in the fall, they really are worth the effort. Join Rensselaer County Master Gardener Don Schlegel for a discussion of the how-to's in their culture and why you need some in your garden.

**10. The Easy Kitchen Garden** - Would you like to grow bushels of healthy, organic food without breaking your back -- or your bank account? Kevin Lee Jacobs will show you how to design a Kitchen Garden that is both fun to maintain and beautiful to behold. Kevin Lee Jacobs is an award-winning author and a regular columnist for *Garden Design Magazine*. His life-style website, *A Garden for the House* ([www.agardenforthehouse.com](http://www.agardenforthehouse.com)), is wildly popular with both gardeners and foodies.

**11. Garden of Unearthly Delights** - This workshop will present ways to think about incorporating art in the garden to address a myriad of gardening needs: enhance plantings; support their growth; distract the eye; bring whimsy, etc. Using photographs of her own found-metal botanically inspired sculpture to illustrate, Fredda Merzon will share ways to enhance your own creativity. Fredda is an amateur gardener turned metal sculptor who started welding four years ago. She has exhibited her work in six shows in the area. She grows her live and imagined garden in Troy.

**12. Flora, Fauna and People of Mexico's Copper Canyon** - Linda Ford, Rensselaer County Master Gardener, has made several trips to this region which has resulted in her publishing a field guide to the wildflowers, and she now leads tours to this

area. She will share with you the spectacular scenery, the beautiful wildflowers and hummingbirds, as well as cultural and historical sights. Also, she will share stories and photos of her contacts with the Tarahumara Indians.

**13. Perennials – Go Native!** Do you want to give your garden some true North American style? Then consider planting native plants. David Chinery, Senior Resource Educator with Cornell Cooperative Extension of Rensselaer County, will show you some native perennials (plus a few woodies, too) that will thrive in the greater Capital District.

**14. Gardening For A Lifetime** – With a nod to Sydney Eddison's book "Gardening For A Lifetime: How To Garden Wiser As You Grow Older," our panel of Master Gardeners will share how they have adapted and changed their gardens and gardening practices as they've been outstanding in their field longer and longer. But don't be fooled - their tricks and tips can be of use to gardeners of all ages.

**15. Rhododendrons and Azaleas: Culture and Care** – While they're all beautiful, rhododendrons and azaleas are not all created equally, since some are much easier to grow than others. Keith Austin, Rensselaer County Master Gardener and professional estate manager, will explore the various types and what it takes to grow them well in our part of the world.

**16. Top Ten Weeds and What To Do About Them** - Do you battle with ground ivy, poison ivy or garlic mustard? In this class you will learn all about the "enemy" and how to manage it. The weeds in our discussion have made the cut by being the most frequently asked about by homeowners. These devilish plants can take over quickly, so don't turn your back on them - learn how to keep them in check instead. Presenter Sue Pezzolla is an Educator with Cornell Cooperative Extension of Albany County.